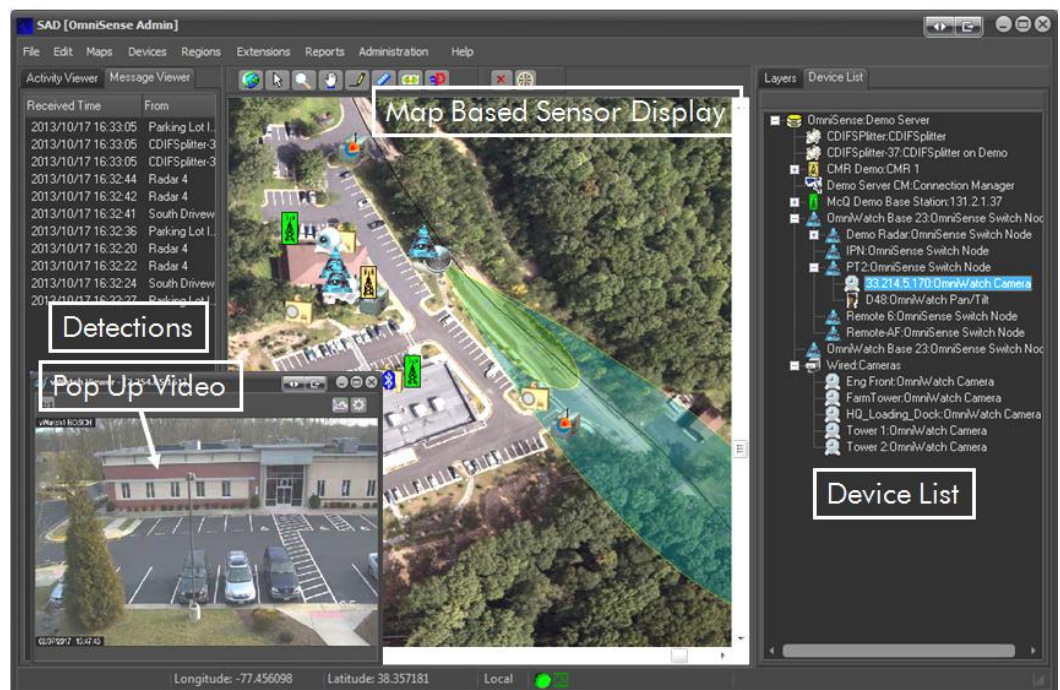


# TacSAD Software

## Portable PC User Interface for McQ Sensor Products

### TacSAD SOFTWARE DESIGN

The TacSAD user interface is designed to provide full sensor system display and control of McQ products. This includes an integrated map display with sensor unit icons located on the map, a time rolling log of sensor detections, a Device list of all system devices, a unit Configuration window to set up any system component, a Status Display showing battery life and health for every system unit, an Activity Data Window to display any past sensor detection data, an Image Data window to display any past picture or video, a real time activity alert feature that flashes sensor icons and provides audio announcements when target detections occur, instant display of the sensor location on the map when it detects activity, and a user interface that requires minimal time for users to turn on the unit and become familiar with the operation.



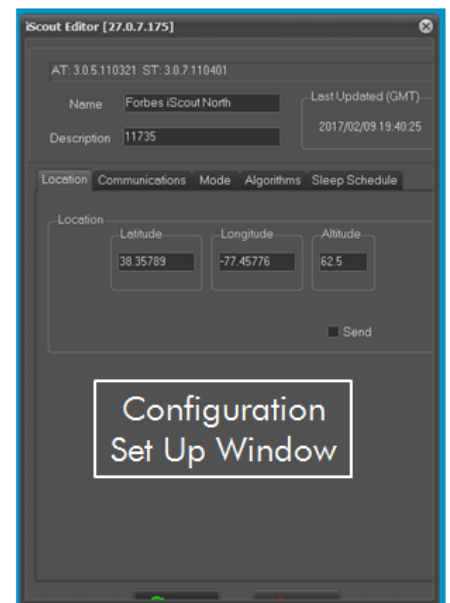
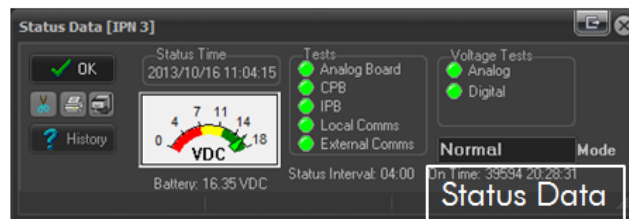
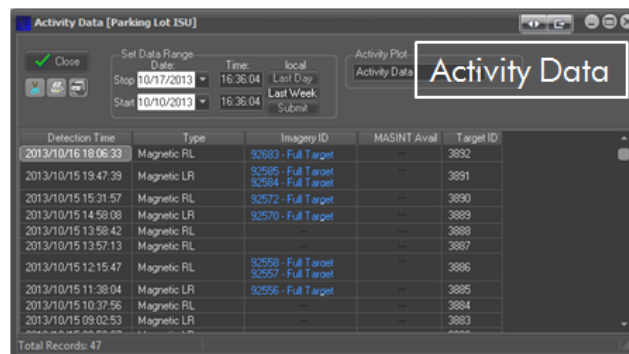
- Real Time Map Display of iScout® Sensor Activity, OmniWatch® Target Video, and rScene® Micro Radar Target Tracks.
- A McQ Base Station Unit receives the sensor and video information and provides an IP Network connection into the TacSAD PC Computer.
- TacSAD provides full Configuration Control for all McQ Sensor Products.
- TacSAD is compatible with Windows 7 and 8.1 PC Operating Systems.
- The TacSAD software integrates server software with Windows application, GIS Mapping, Database Management, McQ Communications Management, McQ OmniPush XML, and McQ Client User Interface software.
- TacSAD provides system command and control, sensor data storage, video storage and replay, system health and status, and XML information integration with other user systems.
- The TacSAD provides the user with easy system configuration and set up capabilities in addition to real time information display and situation assessment.

## TacSAD OPERATIONS

The TacSAD software is installed on a Windows PC Laptop or Tablet provided by McQ or the customer. The PC platform has the functionality to provide a user display, a keyboard, USB and IP input/output ports, a hard drive storage device, AC or battery power, a Windows Server operating system and adequate performance handle the streaming data from McQ sensor systems. The McQ TacSAD software links to the PC functions for display, audio sounds, GPS, Google maps, keyboard functions, external I/O, screen actions, CPU processing, and the whole host of user settings for displays and overall user functionality. McQ designed external network units to provide serial CDIF protocol information from our sensor system units and integrate this data into the Windows PC platform. These external McQ Base Station and Wireless Relay units translate RF wireless radio modem data into a binary data stream compatible with the PC.

# TacSAD User Interface

The user can reach out and control all of the sensor system units over the network. All data can be reviewed and the units can be reconfigured as needed.



- Provides Portable User Interface for all McQ Products
- Real Time Target Activity Display
- Archival Storage for Reviewing Target Activity and System Status
- Pushes All Information to Other Common Operating Picture Systems
- Provides Network Connectivity to Other Users



Specifications may change due to product enhancements. For more information about any of our products or services, please visit us on the web at: [www.mcqinc.com](http://www.mcqinc.com)

© June 2017 McQ Inc.



1551 Forbes Street  
Fredericksburg, VA  
22405-1603 USA  
T: 540.373.2374  
[www.mcqinc.com](http://www.mcqinc.com)