

Tough sensors for an insensitive planet

*SELECTED BY THE U.S. GOVERNMENT FOR
DEMANDING OPERATIONAL REQUIREMENTS*

OmniSense® DESIGN

OmniSense® is designed to provide target detection and classification information to distributed users anywhere in the world. OmniSense® field units will survive extreme environmental conditions and operate for very long periods of time on batteries. When a target approaches OmniSense® sensors, the target is classified and a picture is automatically captured. All of this information is immediately sent via wireless RF communications to users and displayed on the OmniSense® Common Operating Picture (COP) user interface. The OmniSense® system is designed for network operation so information can be distributed in open network protocols. The target detections and images are shown on the COP map based display and stored on the database for post event analysis. The OmniSense® system has many report features such as system health and status details, target detection histograms, battery usage and replacement notification.

OmniSense® Imaging Sensor Unit

The Leader in Remote Intrusion Detection Systems

FIRST to Integrate Sensors and Imagers to Identify Targets

FIRST to Integrate Multiple Sensor Data to Dramatically Reduce False Alarms

FIRST to Provide a Complete Networked System for Distributed Display and Control



OmniSense® is a complete remote area monitoring solution that allows the sensors to be placed anywhere, then be network connected to the user through a map based display. The target detection is automated plus the operator has full control of the system in the field.



OmniSense® PERFORMANCE

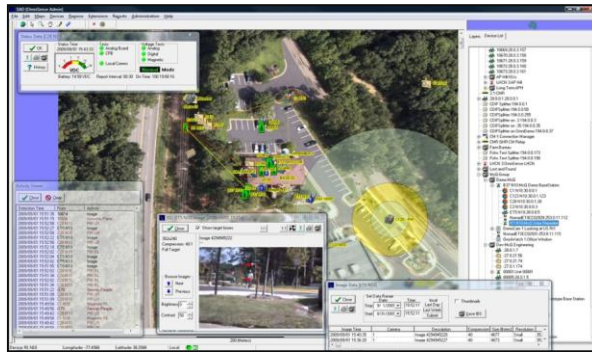
OmniSense® has digital sensor and image processing that extracts target features and scores each detection to insure no false alarms are sent to the user. This advanced digital processing significantly reduces false alarms, insures the target classification is accurate, and makes sure the best target picture is provided to the user. The detection performance and false alarm rejection separates OmniSense® from other products in the market. This performance is important because wind, rain, and other environmental effects do not cause false detections. This processing gives OmniSense® superior detection ranges and probability of detection. When OmniSense® reports a target you know what it is and you know it's real.

For more information on any of our products or services please visit us on the Web at:
www.mcqinc.com

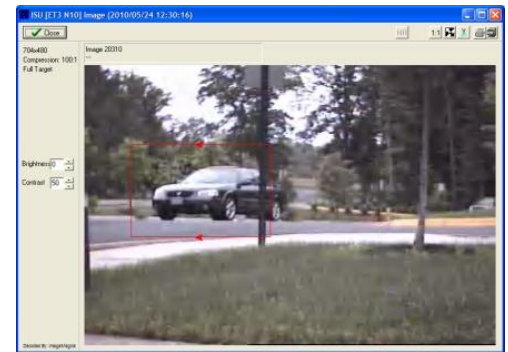
© February 2012 McQ Inc.

OmniSense® Features

- Automated Target Detection, Classification, and Image Capture
- Low False Alarm Rate Integrating Seismic, Acoustic, Magnetic, and Passive Infrared Detector Data
- Long Operational Life Due to Very Low Power Consumption
- RF Wireless Terrestrial and Satellite Network Communications
- Distributed Architecture of Sensors, Servers, and User Displays
- A Common Data Interchange Format (CDIF) for Communicating and Fusing Sensor Information
- Map Based Situation Awareness Displays
- Very Easy Installation with the Ability to Reconfigure a Sensor After it is Emplaced
- Secure Data Communications



Map Based User Displays are provided via a Network Connection to the Server. The user sees the Target Location and all of the Target Detection Data.



The Sensor Report sent from the field via a Network to the Server shows a picture of the Target along with Target and Sensor Health and Status Info.



OmniSense® Automatically Captures Color Day and Infrared Night Images to From Short or Long Range Optics to Provide Target Detection and Identification Details.



1551 Forbes Street
Fredericksburg, VA
22405-1603 USA

T: 540.373.2374
www.mcqinc.com